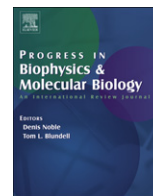




Contents lists available at ScienceDirect

Progress in Biophysics and Molecular Biology

journal homepage: www.elsevier.com/locate/pbiomolbio

Review

Molecular physiology of glucagon-like peptide-1 insulin secretagogue action in pancreatic β cellsColin A. Leech^{a,**}, Igor Dzhura^a, Oleg G. Chepurny^a, Guoxin Kang^c, Frank Schwede^d, Hans-G. Genieser^d, George G. Holz^{a,b,*}^a Department of Medicine, State University of New York Upstate Medical University, Syracuse, NY, USA^b Department of Pharmacology, State University of New York Upstate Medical University, Syracuse, NY, USA^c Department of Cardiology, New York University School of Medicine, NY, USA^d BIOLOG Life Science Institute, Bremen, Germany

ARTICLE INFO

Article history:

Available online 19 July 2011

Keywords:

GLP-1
Glucose
Insulin
Exocytosis

ABSTRACT

Insulin secretion from pancreatic β cells is stimulated by glucagon-like peptide-1 (GLP-1), a blood glucose-lowering hormone that is released from enteroendocrine L cells of the distal intestine after the ingestion of a meal. GLP-1 mimetics (e.g., Byetta) and GLP-1 analogs (e.g., Victoza) activate the β cell GLP-1 receptor (GLP-1R), and these compounds stimulate insulin secretion while also lowering levels of blood glucose in patients diagnosed with type 2 diabetes mellitus (T2DM). An additional option for the treatment of T2DM involves the administration of dipeptidyl peptidase-IV (DPP-IV) inhibitors (e.g., Januvia, Galvus). These compounds slow metabolic degradation of intestinally released GLP-1, thereby raising post-prandial levels of circulating GLP-1 substantially. Investigational compounds that stimulate GLP-1 secretion also exist, and in this regard a noteworthy advance is the demonstration that small molecule GPR119 agonists (e.g., AR231453) stimulate L cell GLP-1 secretion while also directly stimulating β cell insulin release. In this review, we summarize what is currently known concerning the signal transduction properties of the β cell GLP-1R as they relate to insulin secretion. Emphasized are the cyclic AMP, protein kinase A, and Epac2-mediated actions of GLP-1 to regulate ATP-sensitive K^+ channels, voltage-dependent K^+ channels, TRPM2 cation channels, intracellular Ca^{2+} release channels, and Ca^{2+} -dependent exocytosis. We also discuss new evidence that provides a conceptual framework with which to understand why GLP-1R agonists are less likely to induce hypoglycemia when they are administered for the treatment of T2DM.

© 2011 Elsevier Ltd. All rights reserved.

Contents

1. Blood glucose control by incretin hormone GLP-1	237
2. GLP-1-based therapies for the treatment of type 2 diabetes	237
3. GLP-1R activation enhances K_{ATP} channel closure and depolarizes β cells	238
4. GLP-1 inhibits voltage-dependent K^+ currents in β cells	239
5. Ca^{2+} mobilizing actions of GLP-1 in β cells	240
5.1. Evidence that GLP-1 facilitates Ca^{2+} -induced Ca^{2+} release	241
5.2. Non-conventional Ca^{2+} mobilizing properties of GLP-1 mediated by the IP ₃ R	242
5.3. Potential NAADP receptor-mediated actions of GLP-1	243
6. <i>Trp</i> channels may be under the control of GLP-1	243
7. GLP-1 exerts a direct stimulatory effect on Ca^{2+} -dependent exocytosis	244
8. Current controversies regarding Epac2 and PKA	245

* Corresponding author. SUNY Upstate Medical University, IHP 4310 at 505 Irving Avenue, Syracuse, NY 13210, USA. Tel.: +1 315 464 9841; fax: +1 315 464 1566.

** Corresponding author. SUNY Upstate Medical University, IHP 4304 at 505 Irving Avenue, Syracuse, NY 13210, USA. Tel.: +1 315 464 1560; fax: +1 315 464 1561.

E-mail addresses: leechc@upstate.edu (C.A. Leech), holzg@upstate.edu (G.G. Holz).

9. Summary	245
Acknowledgments	245
References	245

1. Blood glucose control by incretin hormone GLP-1

Enteroendocrine cells situated in the wall of the intestine act as nutrient sensors, and they release two “incretin hormones” in response to a meal. These hormones are glucagon-like peptide-1 (GLP-1) secreted by L cells, and glucose-dependent insulinotropic peptide (GIP) secreted by K cells. Since the administration of GLP-1 (but not GIP) to patients with type 2 diabetes mellitus (T2DM) results in a reduction of blood glucose concentration, one focus of current drug discovery efforts concerns the identification of small molecule compounds that will replicate the action of GLP-1, and that will reverse the chronic hyperglycemia that is characteristic of T2DM. In this regard, the Class II GTP-binding protein-coupled receptor for glucagon-like peptide-1 (designated as the GLP-1R) is an established target for blood glucose-lowering agents that are insulin secretagogues, and that are now in use for the treatment of T2DM (Ahren, 2009; Lovshin and Drucker, 2009; Nauck, 2011).

The term “incretin effect” refers to the capacity of intestinally released GLP-1 and GIP to exert gluco-regulatory effects in which they potentiate the action of orally administered glucose to stimulate pancreatic insulin secretion. These insulin secretagogue actions of GLP-1 and GIP lead to an insulin-dependent reduction of blood glucose levels, and the magnitude of this reduction is greater than what would be measurable if insulin secretion was instead stimulated by intravenous administration of glucose in the absence of intestinally released GLP-1 or GIP (Kieffer and Habener, 1999).

The incretin effect is prominent in healthy individuals, whereas it is reduced in patients with T2DM. However, pharmacological doses of intravenously administered GLP-1 exert an acute stimulatory action to raise levels of plasma insulin, thereby lowering levels of blood glucose in patients with T2DM. Of major clinical significance is the fact that the insulin secretagogue action of GLP-1 at the β cell is glucose-dependent. In fact, GLP-1 is an effective insulin secretagogue only under conditions in which the blood glucose concentration is elevated, as is the case in T2DM. This property of GLP-1 is explained by the fact that under conditions in which the blood glucose concentration is hypoglycemic, GSIS is not initiated, and GLP-1 is therefore incapable of potentiating GSIS. What this means is that the acute insulin secretagogue and blood glucose-lowering actions of GLP-1 are self-terminating as blood glucose levels fall, and for this reason, hypoglycemia is less likely to occur when GLP-1 is administered to patients with T2DM. These properties of GLP-1 contrast with the glucose-independent insulin secretagogue actions of sulfonylureas such as tolbutamide. Sulfonylureas do not exert a self-terminating action to stimulate insulin secretion, and for this reason their use involves a risk for hypoglycemia (Knop et al., 2008).

Studies of mice demonstrate that in addition to its insulin secretagogue action, GLP-1 acts as a β cell growth factor to stimulate insulin gene expression and insulin biosynthesis (Holz and Chepurny, 2003). These studies also demonstrate that GLP-1 stimulates β cell proliferation (mitosis) while slowing β cell death (apoptosis) (Holz and Chepurny, 2005). Although it remains to be demonstrated that such actions of GLP-1 occur in humans, these findings suggest that long-term administration of a GLP-1R agonist might result in a beneficial increase of β cell mass and islet insulin content. The expected outcome would be an increased pancreatic insulin secretory capacity in T2DM patients administered GLP-1R agonists. Such beneficial antidiabetic properties are not characteristic of sulfonylureas.

It is also important to recognize that gluco-regulation under the control of GLP-1 results not simply from its direct action at pancreatic β cells. Administered GLP-1R analogs act at pancreatic α cells to inhibit glucagon secretion, and this effect is accompanied by a suppression of hepatic glucose production (Hare et al., 2010). Extra-pancreatic actions of GLP-1 lead to a slowing of gastric emptying, a suppression of appetite, and improved cardiovascular performance (Asmar and Holst, 2010). Such actions of GLP-1 are likely to be mediated not only by its Class II GPCR, but also by a non-conventional pathway activated by metabolites of GLP-1 designated as GLP-1(9–36-amide) (Tomas and Habener, 2010) or GLP-1(28–36-amide) (Tomas et al., 2011). Indeed, speculation has centered on whether this as-yet-to-be identified non-conventional pathway allows GLP-1 to exert an “insulin mimetic” action at the liver. It is presently unclear which GLP-1R analogs now in use for the treatment of T2DM have the capacity to exert effects mediated by this non-conventional pathway, and furthermore, it is uncertain whether inhibitors of GLP-1 metabolism exert undesirable side effects as a consequence of their ability to prevent the formation of GLP-1(9–36-amide) and GLP-1(28–36-amide). Therefore, opportunity exists to expand on our present understanding of GLP-1 pharmacology and physiology.

2. GLP-1-based therapies for the treatment of type 2 diabetes

One GLP-1-based strategy for the treatment of T2DM involves the subcutaneous administration of GLP-1R agonists such as Byetta (exenatide; a synthetic form of exendin-4) or Victoza (liraglutide), a modified form of GLP-1. Unlike GLP-1, both Byetta and Victoza are resistant to metabolic degradation catalyzed by dipeptidyl peptidase-IV (DPP-IV), and for this reason these compounds exert prolonged insulin secretagogue actions when they are administered subcutaneously. This is significant because the hydrolytic activity of DPP-IV quickly renders endogenous GLP-1 inactive, thereby making it an unsuitable treatment for T2DM (Holst, 2004; Israili, 2009).

A second GLP-1-based strategy for the treatment of T2DM involves the administration of DPP-IV inhibitors, compounds that have an ability to raise levels of circulating GLP-1, while having no direct stimulatory effect on L cell GLP-1 secretion. Mechanistically, DPP-IV inhibitors prevent the conversion of GLP-1(7–36-amide) to GLP-1(9–36-amide). Such compounds include Januvia (sitagliptin) and Galvus (vildagliptin), both of which are now in use for the treatment of T2DM. As alluded to above, GLP-1(9–36-amide) may have important actions mediated by a non-conventional pathway, and for this reason it could be that the actions of GLP-1(9–36-amide) would be absent in T2DM patients administered DPP-IV inhibitors. Despite this uncertainty, DPP-IV inhibitors are an attractive therapeutic option due to the fact that these small molecule compounds can be administered orally (Israili, 2009).

There also appears to be great potential for the development of small molecule compounds that stimulate GLP-1 secretion. In this regard, the best-characterized compounds are designated as GPR119 agonists. GPR119 is a Class I GPCR expressed on L cells, and it mediates stimulatory effects of fatty acid-amides on GLP-1 secretion. Since GPR119 is also expressed on β cells, a GPR119 agonist such as AR231453 exerts multiple effects when it is administered orally in combination with glucose (Chu et al., 2008, 2007). It stimulates L cell GLP-1 secretion, thereby allowing circulating GLP-1 to bind to the

β cell GLP-1R and to stimulate insulin secretion. Simultaneously, it directly stimulates insulin secretion by activating GPR119 that is co-expressed with the GLP-1R on β cells. Available evidence indicates that GPR119 agonists exert these secretagogue actions by stimulating cAMP production in the L cells and β cells. The attractiveness of GPR119 agonists is further enhanced by the fact that they are also orally administrable (Jones et al., 2009; Shah and Kowalski, 2010).

3. GLP-1R activation enhances K_{ATP} channel closure and depolarizes β cells

Since GLP-1 stimulates cAMP production in pancreatic β cells (Fig. 1), and because insulin secretion is stimulated by cAMP-elevating agents such as forskolin, there is good reason to believe that the β cell GLP-1R is coupled to cAMP production and insulin exocytosis. Such effects of GLP-1 are likely to be mediated by protein kinase A (PKA) and the Rap GTPase guanine nucleotide exchange factor known as Epac2 (Fig. 1) (Holz, 2004a). In view of the fact that GLP-1 fails to stimulate insulin secretion in the absence of glucose, and since insulin secretion stimulated by glucose does not

necessarily require co-administration of GLP-1, it is widely accepted that the physiologically relevant role of GLP-1 is to potentiate GSIS. In this “consensus model” of β cell stimulus-secretion coupling, β cell glucose metabolism is deemed to be the primary stimulus for insulin secretion, whereas cAMP metabolism is viewed as a potentiating factor, one that is capable of interacting with, and possibly modulating, glucose metabolism (Holz, 2004b). Interestingly, GLP-1 is reported to restore the glucose sensitivity of rat β cells that have been rendered metabolically compromised after their exposure to a glucose-free solution (Holz et al., 1993). This induction of “glucose competence” by GLP-1 might be of therapeutic significance since it suggests a capacity of GLP-1 to act through cAMP in order to repair metabolically compromised β cells in the islets of patients with T2DM (Holz and Habener, 1992).

Consistent with the above-summarized concepts, pancreatic insulin secretion is initiated following a simultaneous rise in blood glucose and GLP-1 concentrations. Glucose metabolism in the β cell elevates the cytosolic ATP/ADP concentration ratio and closes ATP-sensitive K^+ channels (K_{ATP}) resulting in β cell depolarization, Ca^{2+} influx through voltage-dependent Ca^{2+} channels (VDCCs), and Ca^{2+} -dependent exocytosis of insulin. This glucose metabolism-dependent closure of β cell K_{ATP} channels is potentiated by GLP-1 (Holz et al., 1993), and this modulatory action of GLP-1 appears to involve not only PKA (Light et al., 2002), but also Epac2, a novel cAMP-binding protein that interacts directly with nucleotide binding-fold 1 (NBF-1) of the sulfonylurea receptor 1 (SUR1) subunit of K_{ATP} channels (Kang et al., 2006, 2008; Ozaki et al., 2000; Shibasaki et al., 2004b). A role for PKA and Epac2 in the control of K_{ATP} channels is indicated because the inhibitory action of GLP-1 at K_{ATP} channels is mimicked by the catalytic subunit of PKA (Light et al., 2002), and also by 8-pCPT-2'-O-Me-cAMP, an Epac-selective cAMP analog (ESCA) that does not activate PKA when it is used at appropriately low concentrations (Enserink et al., 2002; Holz et al., 2008a).

In our most recent studies, we find that K_{ATP} channel inhibition by ESCAs can best be evaluated using a new and improved cAMP analog (8-pCPT-2'-O-Me-cAMP-AM) that is modified to incorporate an acetoxymethyl ester (AM-ester) moiety, thereby rendering it highly membrane permeable (Chepurny et al., 2009; Vliem et al., 2008). In side-by-side comparisons examining the actions of GLP-1R agonist exendin-4 (Ex-4) and the newly available ESCA-AM, we find that both substances depolarize mouse β cells, as studied in intact islets (Fig. 2A–C), or in single β cells (Fig. 3A,B). These depolarizing actions of Ex-4 and the ESCA-AM are accompanied by an increase of $[Ca^{2+}]_i$ that in intact islets is sometimes accompanied by synchronous oscillations of the membrane potential and $[Ca^{2+}]_i$ (Fig. 2C). Importantly, all such actions of Ex-4 and the ESCA-AM can be measured under conditions in which islets or β cells are treated with the PKA inhibitor H-89 (Figs. 2A–C, 3A,B). Furthermore, such actions of Ex-4 and the ESCA-AM require that islets and β cells be equilibrated in a concentration of glucose that is stimulatory for insulin secretion, as expected if β cell glucose metabolism and Epac2 activation interact synergistically to close K_{ATP} channels and to depolarize β cells.

To provide additional confirmation that the depolarizing action of the ESCA-AM results from the closure of K_{ATP} channels, our studies included measurements of the whole-cell K_{ATP} current and single K_{ATP} channel activity in mouse β cells since such an analysis has not been reported for mice. We find that the hydrolysis-resistant Epac activator Sp-8-pCPT-2'-O-Me-cAMPs reduces a glyburide-sensitive membrane current that corresponds to the whole-cell K_{ATP} current (Fig. 3C,D). We also find that the Epac activator 2'-O-Me-cAMP inhibits the activity of single K_{ATP} channels, as measured in inside-out excised patches (Fig. 3E,F). Such actions of Sp-8-pCPT-2'-O-Me-cAMPs and 2'-O-Me-cAMP are qualitatively identical to what was reported in prior studies examining Epac2 regulated K_{ATP} channel activity in human β cells and rat INS-1 cells (Kang et al., 2006, 2008).

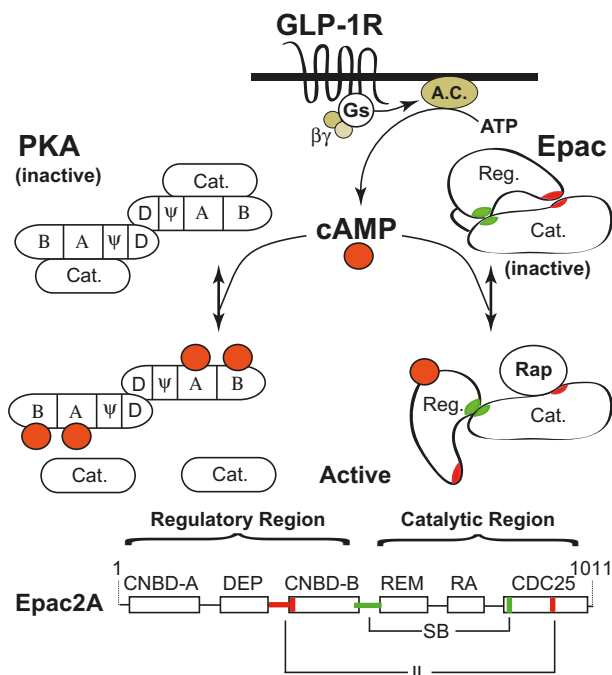


Fig. 1. GLP-1 activates PKA and Epac2 in pancreatic β cells. Binding of GLP-1 to its receptor stimulates the activities of G_s and adenylyl cyclase (A.C.), thereby generating cAMP. In pancreatic β cells the major effectors of cAMP signaling are protein kinase A (PKA) and Epac2, although islets are also known to express low levels of Epac1 (Chepurny et al., 2010; Kelley et al., 2009). The regulatory subunits of PKA contain a dimerization domain (D), a pseudosubstrate domain (ψ), and two cyclic nucleotide binding domains (CNBD, A & B) where cAMP binds and causes the dissociation and activation of the catalytic (Cat.) subunits. In the absence of cAMP, CNBD-A of the regulatory subunit plays an important role in binding the catalytic subunit, whereas CNBD-B reduces the K_d for activation of PKA by cAMP (Sjoberg et al., 2010). The regulatory subunits also bind A-kinase anchoring proteins (AKAPs) that play an important role in the cellular localization of PKA that is under the control of GLP-1 (Lester et al., 1997). The N-terminal of Epac2 contains two CNBDs (A & B) separated by a DEP domain (Disheveled, Egl-10, Pleckstrin homology domain). This is the regulatory region (Reg.) of Epac2, and it sterically inhibits the C-terminal catalytic region (Cat.). Two interaction zones are formed in the inactive state of Epac2, an ionic latch (IL, red) and a switch board (SB, green). Binding of cAMP to CNBD-B causes a conformational change that allows Rap to bind to the CDC25 homology domain that catalyzes GTP/GDP exchange and activation of Rap. The catalytic domain of Epac2 also contains a Ras-exchanger motif (REM) and a Ras-association domain (RA). Figure adapted from Rehmann et al. (2007). CNBD-A near the N-terminal of Epac2 has low affinity for cAMP and is not important for Epac2 activation, but is instead important for cellular localization of Epac2 (Niimura et al., 2009).

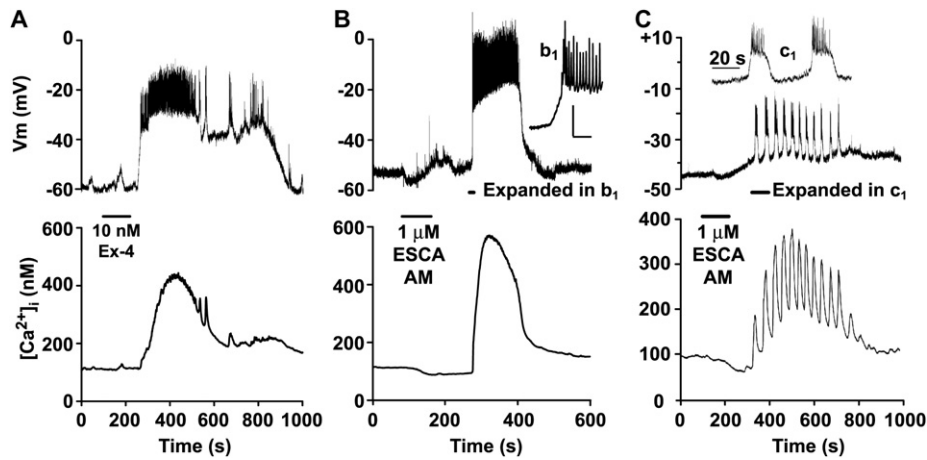


Fig. 2. On-islet measurements of membrane potential demonstrate depolarizing actions of GLP-1R agonist Exendin-4 and Epac activator 8-pCPT-2'-O-Me-cAMP-AM. A). Perforated patch (*top trace*) measurements of the membrane potential (V_m) were obtained from a cell located on the surface of a mouse islet. Simultaneously, the whole-islet $[Ca^{2+}]_i$ was measured using fura-2 (*lower trace*). A small bolus of test solution containing 10 nM exendin-4 (*Ex-4*, *horizontal bar*) was applied directly to the islet, and it stimulated depolarization and an increase of $[Ca^{2+}]_i$. Note that in this experiment, a train of action potentials was superimposed on a plateau depolarization (for methods, see (Holz et al., 1995)). B). Depolarization (*top trace*) accompanied by an increase of whole-islet $[Ca^{2+}]_i$ (*lower trace*) was also measured when a mouse islet was exposed to 1 μ M 8-pCPT-2'-O-Me-cAMP-AM (ESCA-AM). The initial burst of action potentials is shown on an expanded time scale in the inset (b_1). For A and B, the bath solution contained 7.5 mM glucose and 10 μ M H-89, thereby establishing that PKA activity was not required to induce depolarization. C). Perforated patch measurements of V_m (*top trace*) and whole-islet $[Ca^{2+}]_i$ (*lower trace*) from a cell located on the surface of a mouse islet. In this cell, application of 1 μ M 8-pCPT-2'-O-Me-cAMP-AM (*horizontal bar*) induced synchronous bursts of action potentials and oscillations of $[Ca^{2+}]_i$. The inset (c_1) illustrates the initial bursts of action potentials in response to 8-pCPT-2'-O-Me-cAMP-AM, as displayed on an expanded time scale. For A–C, the measurements of membrane potential and $[Ca^{2+}]_i$ were obtained as described previously.

In these prior studies, Epac2 activation produced a left-shift in the dose–response relationship describing ATP-induced inhibition of K_{ATP} channels (Kang et al., 2008). Thus, our findings are consistent with the view that GLP-1 potentiates the inhibitory action of β cell glucose metabolism at K_{ATP} channels, thereby explaining why the insulin secretagogue action of GLP-1 is glucose-dependent. Interestingly, Epac2 activation also increases the inhibitory effect of sulfonylureas at K_{ATP} channels. This finding may explain the increased incidence of hypoglycemia that is observed in humans when sulfonylureas are administered in combination with GLP-1R agonists (Leech et al., 2010).

To explain prior observations concerning K_{ATP} channel regulation, we proposed a model whereby Epac2 activation leads to Rap1 GTPase activation, thereby allowing Rap1 to activate its cognate effector phospholipase C-epsilon ($PLC\epsilon$) (Holz et al., 2006). Since Epac2 is bound to SUR1, this leads to the hydrolysis of phosphatidylinositol 4,5 bisphosphate (PIP_2) in the immediate vicinity of K_{ATP} channels. By removing the activating effect of PIP_2 at K_{ATP} channels, the open probability of K_{ATP} channels is reduced, thereby leading to an increased apparent affinity of the channels for ATP and sulfonylureas. The net effect is an increased ability of ATP and sulfonylureas to inhibit K_{ATP} channels. This model incorporates the concept that SUR1 serves as scaffold at which is located a signaling complex comprised of Epac2, Rap1, and $PLC\epsilon$.

An alternative model, based on studies of vascular smooth muscle, proposes that Epac activation leads to the stimulation of protein phosphatase 2B (PP2B/calcineurin), with consequent dephosphorylation and inhibition of K_{ATP} channels (Purves et al., 2009). Such findings are noteworthy since calcineurin inhibitors are used as immunosuppressants after organ transplantation. Since calcineurin inhibitors inhibit insulin secretion and predispose to diabetes (Ozbay et al., 2011), it is possible that their clinical use as immunosuppressants explains the development of post-transplantation diabetes. In this scenario, calcineurin inhibitors antagonize an Epac2-mediated inhibitory effect of GLP-1 at K_{ATP} channels, thereby upregulating channel activity so that glucose metabolism is a less effective stimulus for K_{ATP} channel closure and insulin secretion.

Since Epac2 binds to SUR1, and since this interaction is disrupted by cAMP (Shibasaki et al., 2004a), it is conceivable that Epac2 exerts a direct effect at K_{ATP} channels, and that this effect is independent of Rap1, $PLC\epsilon$, or calcineurin. It is also possible that the interaction of Epac2 with SUR1 enables the formation of a signaling complex that directly controls exocytosis. Such a concept is consistent with the finding that Epac2 binds to Munc13-1 (Kwan et al., 2007), a protein that is important for ATP-dependent “priming” and exocytosis of secretory granules and synaptic vesicles in excitable cells (Sheu et al., 2003). Exocytosis under the control of Munc13-1 is enhanced by the production of endogenous diacylglycerol (DAG) (Sheu et al., 2003). Thus, it is possible that the activation of Epac2 bound to SUR1 results in $PLC\epsilon$ activation, with consequent generation of DAG from its precursor PIP_2 . In this model, PIP_2 hydrolysis promotes K_{ATP} channel closure and Ca^{2+} influx, while also providing the DAG that activates Munc13-1. Simultaneously, DAG may activate protein kinase C (PKC), thereby additionally facilitating insulin exocytosis, possibly by increasing the size of a highly Ca^{2+} -sensitive pool of secretory granules (Wan et al., 2004; Yang and Gillis, 2004).

4. GLP-1 inhibits voltage-dependent K^+ currents in β cells

Evidence exists that the GLP-1R agonist Ex-4 acts through PKA to inhibit a voltage-dependent K^+ current in rat β cells (MacDonald et al., 2002). This effect of Ex-4 is one that should enhance GSIS since the inhibition of voltage-dependent K^+ channels (K_V) leads to action potential prolongation, thereby allowing increased Ca^{2+} influx during each action potential. Given that GLP-1 has only a small facilitatory effect on voltage-dependent Ca^{2+} currents in β cells (Gromada et al., 1998), any action of GLP-1 to inhibit K_V channels might be of considerable significance. Interestingly, the PKA-mediated action of Ex-4 to inhibit K_V channels in rat β cells is reinforced by a cAMP-independent action of the peptide to signal through the GLP-1R and to activate PI3-kinase (MacDonald et al., 2003). This PI3-kinase-mediated signaling capacity of the GLP-1R is attributed to its ability to promote epidermal growth factor receptor (EGF-R) “transactivation” with consequent activation of β cell growth factor-like signaling pathways (Buteau et al., 2003).

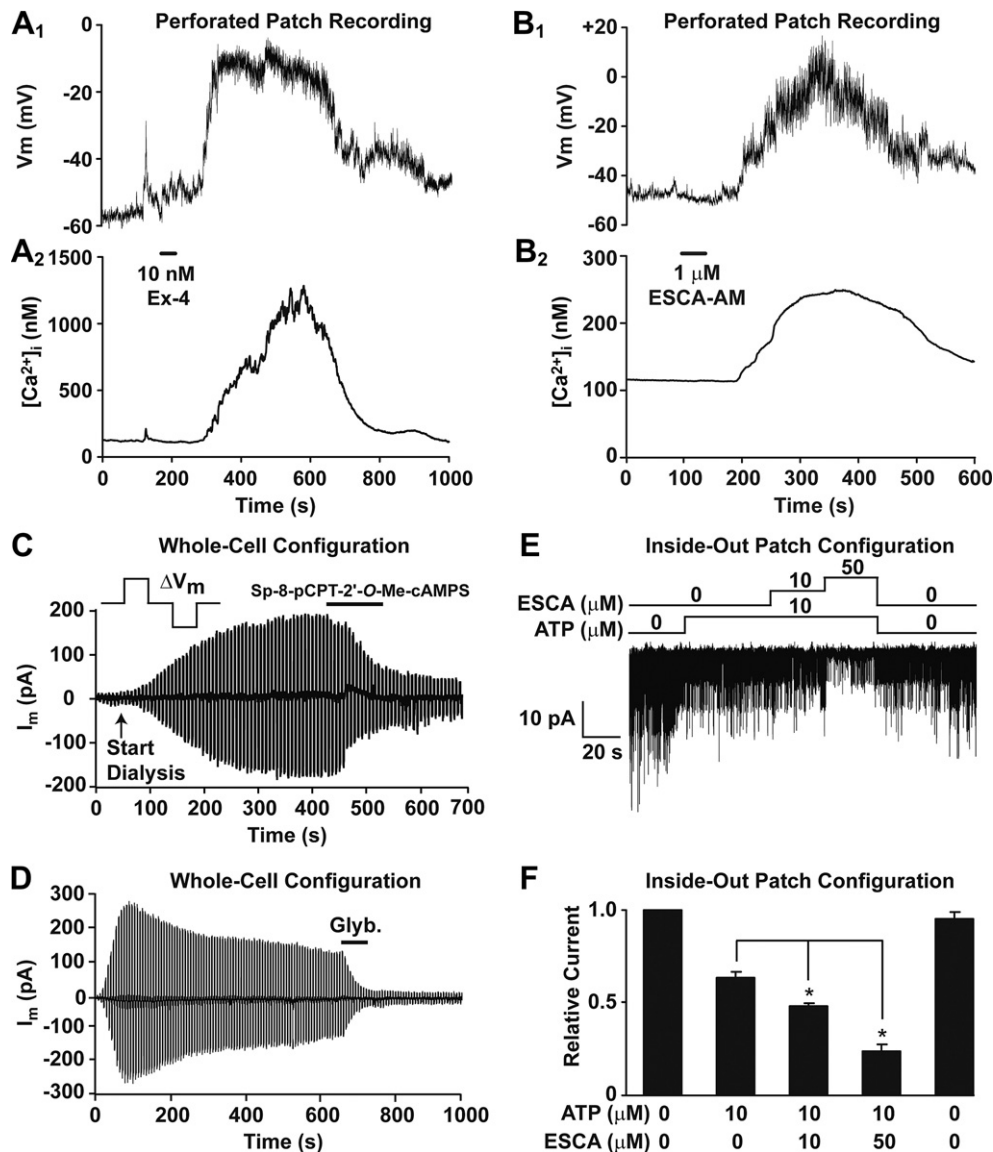


Fig. 3. GLP-1R agonist Exendin-4 and Epac activator 8-pCPT-2'-O-Me-cAMP-AM depolarize single mouse β cells by inhibiting K_{ATP} channels. A). Perforated patch recording of the membrane potential from an isolated single β cell equilibrated in buffer containing 7.5 mM glucose and 10 μ M H-89 (A_1). The $[Ca^{2+}]_i$ was simultaneously measured using fura-2 (A_2). Application of 10 nM exendin-4 (Ex-4, horizontal bar) induced depolarization and a simultaneous rise of $[Ca^{2+}]_i$. B). Identical recording conditions as in A except that the β cell was stimulated with 1 μ M 8-pCPT-2'-O-Me-cAMP-AM (ESCA-AM, horizontal bar). Depolarization accompanied by a rise of $[Ca^{2+}]_i$ was observed similar to that elicited by exendin-4. C, D). The whole-cell K_{ATP} current of a mouse β cell was measured under conditions of voltage clamp and dialysis using 0.3 mM ATP (for methods, see (Kang et al., 2006)). This K_{ATP} current was inhibited by Sp-8-pCPT-2'-O-Me-cAMPS (100 μ M) (C) or glyburide (Glyb., 10 nM) (D) applied extracellularly (horizontal bars). Findings are representative of results obtained using $n = 6$ β cells from two C57BL/6 mice per experimental condition. E). Single K_{ATP} channel activity was measured in excised inside-out patches from mouse β cells (for methods, see (Kang et al., 2008)). Application of ATP (10 μ M) to the intracellular surface of the patch inhibited K_{ATP} channel activity. Subsequent application of the Epac activator 2'-O-Me-cAMP (ESCA; 10 or 50 μ M) further inhibited channel activity. F). The actions of ATP and 2'-O-Me-cAMP measured in excised patches were quantified as NP_o values of K_{ATP} channel activity normalized to the K_{ATP} channel activity measured at the start of the experiment in the absence of ATP and 2'-O-Me-cAMP (for methods, see (Kang et al., 2008)). Results for F are the means \pm s.e.m. using three excised patches from three β cells of three C57BL/6 mice.

Since activation of the EGF-R results in Ras GTPase activation that directly activates PLC ϵ , it could be that a convergent mechanism of GLP-1R signal transduction exists in which PLC ϵ catalyzed hydrolysis of PIP₂ underlies inhibitory effects of GLP-1 at K_{ATP} and K_V channels.

5. Ca²⁺ mobilizing actions of GLP-1 in β cells

GLP-1 not only promotes Ca²⁺ influx through VDCCs, but it also mobilizes Ca²⁺ stored in intracellular organelles. Ca²⁺ released in this manner serves as a direct stimulus for exocytosis in β cells (Dyachok and Gylfe, 2004; Kang and Holz, 2003; Kang

et al., 2003). Available evidence indicates that GLP-1 facilitates the opening of intracellular Ca²⁺ release channels, and that these channels correspond to inositol trisphosphate receptors (IP₃R), ryanodine receptors (RyR), and nicotinic acid adenine dinucleotide phosphate receptors (NAADPR). The intracellular sources of Ca²⁺ include the endoplasmic reticulum (ER), endosomes and lysosomes ("acidic Ca²⁺ stores"), and possibly the secretory granules. For the IP₃R and RyR, Ca²⁺ mobilization is a mechanism of Ca²⁺ induced Ca²⁺ release (CICR) in which metabolites such as IP₃ and cyclic-ADP-ribose enhance the ability of cytosolic Ca²⁺ to activate Ca²⁺ release channels located on intracellular organelles (Islam, 2010).

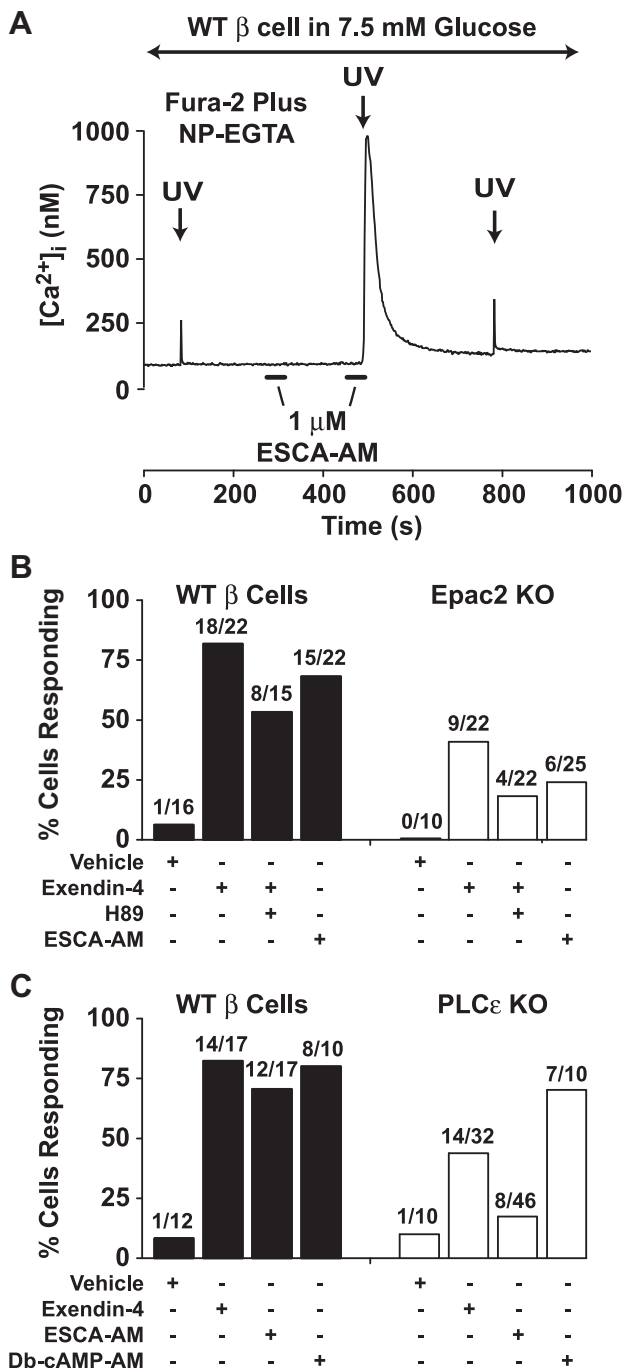


Fig. 4. Ca^{2+} -induced Ca^{2+} release is facilitated by GLP-1R agonist Exendin-4 in single mouse β cells. **A.** A wild-type (WT) mouse β cell was loaded with a fura-2 and NP-EGTA in order to perform the uncaging of Ca^{2+} while measuring the $[\text{Ca}^{2+}]_i$ (for methods, see (Kang et al., 2005)). Flash photolysis with brief ultraviolet light (UV, 340 nm) releases a small amount of Ca^{2+} under control conditions in which cells were bathed in 7.5 mM glucose. Note that a 30 s extracellular application of 1 μM 8-pCPT-2'-O-Me-cAMP-AM (ESCA-AM, horizontal bar) alone had no effect on $[\text{Ca}^{2+}]_i$, whereas application of 8-pCPT-2'-O-Me-cAMP-AM in combination with UV flash photolysis produced a large transient increase of $[\text{Ca}^{2+}]_i$ due to CICR. **B.** A population study of fura-2 and NP-EGTA loaded mouse β cells that were subjected to UV flash photolysis in the presence of exendin-4 (10 nM), exendin-4 plus H-89 (10 μM), or 8-pCPT-2'-O-Me-cAMP-AM (1 μM , ESCA-AM). Note that treatment of wild-type (WT) mouse β cells with either exendin-4 or 8-pCPT-2'-O-Me-cAMP-AM increased the percentage of cells exhibiting CICR. Also note that the action of exendin-4 to facilitate CICR was reduced in β cells of Epac2 knockout (KO) mice, whereas the action of 8-pCPT-2'-O-Me-cAMP-AM was nearly abrogated (for additional information regarding the Epac2 KO mice, see (Dzhura et al., 2010)). **C.** A population study as in **B** except that CICR was evaluated in β cells of WT and PLC ϵ KO mice. Note that the action of exendin-4 to facilitate CICR was

5.1. Evidence that GLP-1 facilitates Ca^{2+} -induced Ca^{2+} release

GLP-1 facilitates CICR in mouse and human β cells, and also in rat INS-1 cells that secrete insulin (Holz et al., 1999; Kang et al., 2001). This CICR is generated by the opening of intracellular Ca^{2+} release channels, the various subtypes of which are expressed in a species-specific manner such that the expression of the type-2 isoform of RYR (RYR-2) is higher in human and rat β cells, whereas it is lower in mouse β cells that may instead primarily use the IP $_3$ R to mobilize Ca^{2+} (Beauvois et al., 2004; Dyachok and Gylfe, 2004; Dyachok et al., 2004; Holz et al., 1999). For human and mouse β cells, CICR can be facilitated not only by GLP-1, but also by cAMP analogs that activate either PKA or Epac2 selectively. This finding demonstrates that there is dual PKA and Epac2 regulation of the Ca^{2+} release process (Kang et al., 2005, 2003). In fact, it has been proposed that β cell IP $_3$ receptors are under the control of PKA, whereas RYR-2 is under the control of Epac2 (Gromada et al., 2004; Tsuboi et al., 2003). Furthermore, this mechanism of CICR is contingent on equilibration of β cells in stimulatory concentrations of glucose, as expected if intracellular Ca^{2+} uptake and release are under the control of glucose metabolism. Consistent with this concept, the combined administration of glucose and GLP-1 to β cells induces synchronized oscillations of the cytosolic $[\text{Ca}^{2+}]_i$ and $[\text{cAMP}]_i$, and these oscillations are coupled to exocytosis of insulin (Dyachok et al., 2008; Holz et al., 2008b; Landa et al., 2005).

Available evidence indicates that Ca^{2+} influx through L-type (nifedipine-sensitive) VDCCs results in an increase of cytosolic Ca^{2+} concentration that serves as a trigger for CICR if and only if the intracellular Ca^{2+} release channels are in a sensitized state (Gromada et al., 1995, 2004; Holz et al., 1999). PKA-dependent facilitation of CICR by GLP-1 is believed to be a consequence of the phosphorylation of intracellular Ca^{2+} release channels (Dyachok and Gylfe, 2004; Holz et al., 1999). Simultaneously, PKA may synergize with β cell glucose metabolism to promote the uptake of Ca^{2+} into intracellular organelles, thereby increasing the amount of Ca^{2+} available for release (Yaekura and Yada, 1998). These PKA-mediated actions of GLP-1 are complemented by its ability to activate Epac2 and to stimulate a signal transduction cascade comprised of Rap1, PLC ϵ , PKC, and Ca^{2+} /calmodulin-dependent protein kinase II (CaMK-II) (Dzhura et al., 2010). Activation of this cascade facilitates CICR not only in β cells, but also in cardiomyocytes where CaMK-II ultimately phosphorylates RYR-2 (Oestreich et al., 2009).

Epac2-dependent mobilization of Ca^{2+} is most convincingly demonstrated in assays of CICR initiated by the UV flash photolysis-induced uncaging of Ca^{2+} in β cells loaded with "caged Ca^{2+} " that is bound to NP-EGTA (Fig. 4). Thus, when β cells from wild-type (WT) mice are bathed in a solution containing 7.5 mM glucose, flash photolysis releases Ca^{2+} from NP-EGTA, and this Ca^{2+} acts as a stimulus for CICR. Under control conditions in which only a small amount of Ca^{2+} is uncaged, CICR is not initiated, and the small increase of $[\text{Ca}^{2+}]_i$ that is measured simply reflects the uncaging of Ca^{2+} (Fig. 4A). However, if the experiment is repeated under conditions in which the uncaging of Ca^{2+} is paired with the application of 8-pCPT-2'-O-Me-cAMP-AM to a β cell, then CICR is generated (Fig. 4A). A similar facilitation of CICR is measured in response to Ex-4 or the PKA-selective cAMP analog Db-cAMP-AM (Fig. 4B,C). By repeating this assay using β cells from Epac2 or PLC ϵ knockout (KO) mice, it is possible to demonstrate that the KO of Epac2 or PLC ϵ nearly abrogates the facilitatory action of 8-pCPT-2'-O-Me-cAMP-AM, while not affecting the action of Db-cAMP-AM (Fig. 4B,C).

reduced in the PLC ϵ KO β cells, and that the action of 8-pCPT-2'-O-Me-cAMP-AM was nearly abrogated. Also note that the action of a PKA-selective cAMP analog (Db-cAMP-AM, 1 μM) was unaffected by the KO (for additional information regarding the PLC ϵ KO mice, see (Dzhura et al., 2010)).

Furthermore, as expected for a GLP-1R agonist that activates both PKA and Epac2, these same two knockouts reduce, but do not abrogate, the facilitatory action of Ex-4 (Fig. 4B,C). Interestingly, for β cells of both strains of KO mice, the amplitude of CICR sensitized by PKA activators is nearly identical to that measured in control wild-type β cells. Thus, it appears that a thapsigargin-sensitive store of ER Ca^{2+} may exist, one that is mobilized by selective activators of Epac2 and PKA, and which retains its normal filling state even in β cells of Epac2 and PLC ϵ KO mice. This concept is supported by our finding that thapsigargin raises the cytosolic $[\text{Ca}^{2+}]_i$ by equivalent amounts when comparing its actions in wild-type or Epac2 and PLC ϵ KO mouse β cells (Dzhura et al., 2010). Based on these summarized data, it may be concluded that in β cells there exists a mechanism of second messenger coincidence detection in which intracellular Ca^{2+} release channels respond to Ca^{2+} and cAMP generated as a consequence of GLP-1R stimulation (Kang et al., 2005). Future efforts will be directed at establishing whether these Ca^{2+} release channels correspond to the IP $_3$ R, RYR, or NAADPR.

5.2. Non-conventional Ca^{2+} mobilizing properties of GLP-1 mediated by the IP $_3$ R

Ca^{2+} mobilizing properties of GLP-1 can also be studied in cell lines such as HEK293. For our purposes, these cells are engineered to express recombinant human GLP-1 receptors. Although prior studies of HEK-GLP-1R cells provided evidence that GLP-1 facilitates CICR by

activating PKA, and by promoting the opening of RYR-2 (Gromada et al. 1995), we used these cells to demonstrate that this is not the only means by which GLP-1 exerts its Ca^{2+} mobilizing action. Initially, we found that HEK-GLP-1R cells express P2Y purinergic receptors that can be activated by ADP, and that are coupled to IP $_3$ R dependent Ca^{2+} mobilization. Thus, it was possible to analyze the functional interaction of GLP-1R agonists and ADP to stimulate an IP $_3$ R dependent increase of $[\text{Ca}^{2+}]_i$ in these cells. Using this approach, we find that Ex-4 potentiates the action of ADP to mobilize Ca^{2+} (Fig. 5A).

Surprisingly, this action of Ex-4 in HEK-GLP-1R cells is not blocked by inhibitors of PKA (H-89, Rp-8-CPT-cAMPS), nor is it antagonized by ryanodine (Fig. 5B). Moreover, this action of Ex-4 is mimicked by the cAMP-elevating agents forskolin and IBMX, and these actions are measurable under conditions in which cells are virally transduced with a dominant-negative Epac2 (Fig. 5D). Thus, it seems that neither PKA activation nor Epac2 activation can explain how Ex-4 exerts its action in this assay. Such a conclusion is reinforced by the finding that 8-pCPT-2'-O-Me-cAMP-AM has little capacity to potentiate the Ca^{2+} mobilizing action of ADP (Fig. 5C). Since a selective blocker of PLC (U73122) nearly abolishes Ca^{2+} mobilization in this assay (Fig. 5C), it seems clear that cAMP-elevating agents do in fact modulate the activity of the IP $_3$ R in this cell type. Remarkably, our findings are nearly identical to what was previously reported in studies of HEK293 cells expressing the parathyroid hormone receptor (PTH-R), a Class II GPCR that is

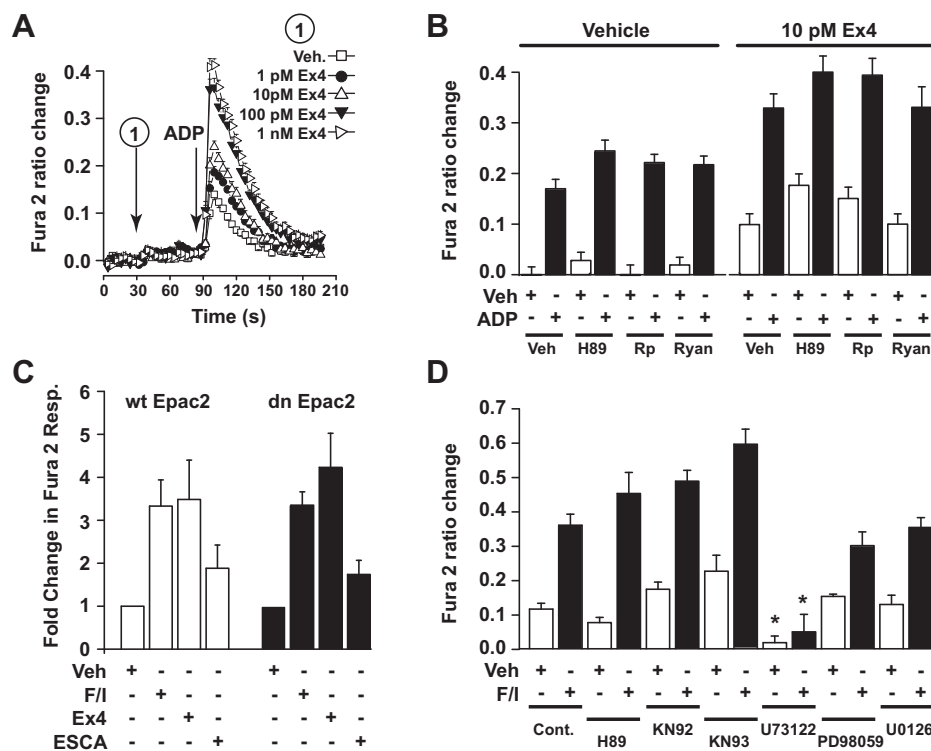


Fig. 5. Potentiation of IP $_3$ R-mediated Ca^{2+} mobilization by GLP-1R agonist Exendin-4. A). Fura-2 determinations of $[\text{Ca}^{2+}]_i$ were obtained in a 96-well format from monolayers of HEK293 cells that express endogenous P2Y purinergic receptors, and that were engineered to stably express the recombinant human GLP-1R. A 2-step injection protocol was used so that the GLP-1R agonist exendin-4 (Ex-4) could be administered to each well 60 s prior to the administration of P2Y receptor agonist ADP (10 nM). Note that exendin-4 potentiated the action of ADP to mobilize intracellular Ca^{2+} . The vehicle solution (Veh.) was standard extracellular saline (SES) containing 0.1% BSA (for methods, see (Leech et al., 2010)). B). The action of ADP (10 nM) to mobilize Ca^{2+} was potentiated by exendin-4 (10 pM), and this action of exendin-4 was not affected by pretreatment of cells with H-89 (5 μM), Rp-8-CPT-cAMPS (Rp, 10 μM), or ryanodine (Ryan., 50 μM). Horizontal lines above the histogram bars indicate the test solutions that were administered during the first injection. The plus or minus symbols under each histogram bar indicate whether a vehicle solution (Veh, 0.1% DMSO) or ADP was administered during the second injection. C). HEK293 cells were virally transduced with wild-type (wt) or dominant-negative (dn) Epac2 (for details regarding wt and dn Epac2, see (Kang et al., 2001)). A 2-step injection protocol was used so that in the first injection the solution contained either: 1) 0.1% DMSO vehicle (Veh), or 2) 2 μM forskolin and 50 μM IBMX (F/I), or 3) 10 pM exendin-4 (Ex-4), or 4) 3 μM 8-pCPT-2'-O-Me-cAMP-AM (ESCA). 60 s after the first injection, a second injection was performed in which ADP (10 nM) was administered. D). Potentiation of ADP (10 nM) induced Ca^{2+} mobilization by forskolin and IBMX (F/I) was unaffected by pretreatment of HEK293 cells with PKA inhibitor H-89 (5 μM), the cAMP-II inhibitor KN-93 or its inactive analog KN-92 (1 μM , each), or the MEK inhibitors (PD98059 (25 μM) and U0126 (10 μM)). Only the PLC inhibitor U73122 (2 μM) was an effective antagonist in this assay.

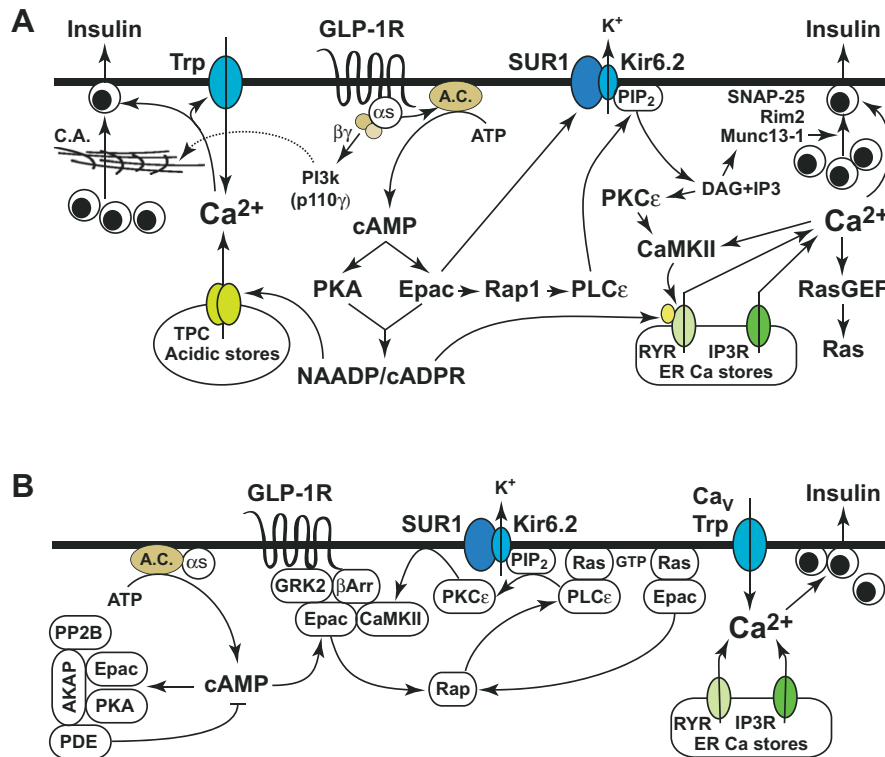


Fig. 6. Glucose-stimulated insulin secretion under the control of GLP-1. **A.** GLP-1 stimulates cAMP production through its effects mediated by the GLP-1R, $G_{\alpha s}$ and adenylyl cyclase (A.C.). The $\beta\gamma$ subunits of G_s activate PI3-kinase (p110 γ) and disrupt cortical actin (CA) in the cytoskeleton in order to promote granule trafficking to the plasma membrane. cAMP activates PKA and Epac2, both of which may play a role in generating NAADP and cADPR. Ca^{2+} is mobilized from endoplasmic reticulum (ER) Ca^{2+} stores that contain ryanodine and IP₃ receptors (RyR, IP₃-R), and also from lysosomal Ca^{2+} stores that contain two-pore Ca^{2+} channels (TPC). Mobilized Ca^{2+} activates *Trp* channels, and this produces membrane depolarization. Ca^{2+} also activates CaMK-II or RasGEFs that are guanine nucleotide exchange factors that promote Ras activation. Rap1 is activated downstream of Epac2, and it mediates the activation of PLC ϵ that hydrolyzes PIP₂ to generate DAG and IP₃. K_{ATP} channel activity is regulated by the direct binding of Epac2 to SUR1, and by local effects of PIP₂ at the channel. DAG activates PKC ϵ and also Munc13-1 in order to facilitate Ca^{2+} -dependent exocytosis. Interactions between Epac2, SNAP-25, and Rim2 play important roles in cAMP-regulated granule trafficking, docking, and fusion. **B.** Compartmentalized cAMP signaling is favored by the assembly of a macromolecular complex comprised of A-kinase anchoring proteins (AKAP) that bind PKA, Epac2, cyclic nucleotide phosphodiesterases (PDE), and protein phosphatase 2B (PP2B). Compartmentalization is also mediated by G protein-coupled receptor kinases (GRK) and β -arrestins that form a complex with Epac2 and CamK-II so that these proteins are located close to the GLP-1R. Translocation of Epac2 and PLC ϵ to the plasma membrane is favored by their direct interactions with H-Ras. PKC ϵ also undergoes translocation to the plasma membrane following Epac2 activation. Compartmentalized Ca^{2+} signaling results from localized Ca^{2+} release from intracellular Ca^{2+} stores, and from localized Ca^{2+} influx that results from the opening of voltage-dependent Ca^{2+} channels (Ca_v) and *Trp* channels.

structurally-related to the GLP-1R. In those published studies, it was concluded that cAMP exerts a direct action at the IP₃R to facilitate its opening, and that this action of cAMP is independent of both PKA and Epac (Tovey et al., 2010). Taken together, these observations raise the possibility that a non-conventional mechanism of Ca^{2+} mobilization underlies the ability of GLP-1 to facilitate the release of Ca^{2+} from IP₃R-regulated Ca^{2+} stores in β cells.

5.3. Potential NAADP receptor-mediated actions of GLP-1

NAADP is a Ca^{2+} -mobilizing metabolite that is reported to bind to and stimulate the opening of “two-pore” Ca^{2+} channels (TPCs) (Calcraft et al., 2009; Naylor et al., 2009). These TPCs mediate the mobilization of Ca^{2+} from “acidic Ca^{2+} stores” (Fig. 6A), and this source of Ca^{2+} may be localized in the lysosomes, endosomes, and possibly secretory granules (Galione et al., 2010). Evidence also exists that the mobilization of Ca^{2+} from these stores might enhance β cell electrical excitability and insulin secretion due to stimulatory effects of released Ca^{2+} on plasma membrane cation channels (Arredouani et al., 2010). Thus, it is of interest that GLP-1 is reported to act through PKA and Epac2 to mobilize Ca^{2+} that is stored within the acidic Ca^{2+} stores of β cells (Kim et al., 2008).

One way acidic Ca^{2+} stores are operationally defined is that they are emptied following treatment with bafilomycin. This inhibitor of

the vacuolar-type H^+ -ATPase is responsible for proton transport that acidifies the intra-organellar compartment, thereby enabling sequestration of Ca^{2+} . We have evaluated the potential role of acidic Ca^{2+} stores in the mobilization of Ca^{2+} by cAMP, and in this regard we find that treatment of mouse β cells with bafilomycin fails to disrupt the action of 8-pCPT-2'-O-Me-cAMP-AM to facilitate CICR under conditions of NP-EGTA loading and UV flash photolysis (Dzhura et al., 2010). In marked contrast, the facilitatory action of 8-pCPT-2'-O-Me-cAMP-AM is blocked by thapsigargin, an inhibitor of SERCA ATPases that mediate the uptake of Ca^{2+} into the ER of β cells. Importantly, we also find that thapsigargin disrupts the action of a PKA-selective cAMP analog (6-Bnz-cAMP-AM) to facilitate CICR (Dzhura et al., 2010). Therefore, available evidence indicates that it is the ER from which Ca^{2+} is released under the experimental conditions used in our assay of CICR. This conclusion is reinforced by our prior finding that in mouse β cells, the ability of forskolin to facilitate CICR is antagonized by heparin, an inhibitor of IP₃R dependent ER Ca^{2+} release (Kang et al., 2005).

6. *Trp* channels may be under the control of GLP-1

Ca^{2+} -activated non-selective cation (CAN) channels are expressed in β cells but their physiological importance was uncertain since their molecular identities were not previously known. CAN

channels were originally described as being activated by high levels of Ca^{2+} , and inhibited by adenine nucleotides (Sturgess et al., 1986). They were later found to be regulated by cyclic nucleotides (Reale et al., 1995). Subsequently, GLP-1 was shown to activate a non-selective cation current in β cells (Holz et al., 1995). This current appears to be identical to the current activated by maitotoxin (Leech and Habener, 1998), and it is generated by the opening of CAN channels that have a single channel conductance of 25–30 pS (Leech and Habener, 1998). The properties of these CAN channels resemble those of TRPM4 channels, a class of CAN channels that play a role in glucose-stimulated and arginine-vasopressin-regulated insulin secretion (Cheng et al., 2007; Marigo et al., 2009). In addition to TRPM4, the closely related CAN channel TRPM5 also plays a role in glucose-stimulated insulin secretion (Brixel et al., 2010; Colsoul et al., 2010). Thus, an attractive hypothesis is that TRPM4 and/or TRPM5 might be under the control of GLP-1, and that activation of these channels would lead to membrane depolarization, Na^+ and Ca^{2+} influx, and increased β cell excitability.

TRPM2 is also a non-selective cation channel, and it is activated by heat and ADP-ribose in β cells. Its activation may explain some stimulatory effects of glucose and GLP-1 on insulin secretion. In this regard, cyclic-ADP-ribose may mediate these effects (Lange et al., 2009; Togashi et al., 2006; Uchida et al., 2011). Evidence also exists that TRPM2 participates in cell death initiated by reactive oxygen species-induced release of Ca^{2+} from lysosomes (Lange et al., 2009). Finally, it should be noted that TRPV1 and TRPV2 are expressed in β cells, and that these capsaicin-activatable channels seem to play some role in the dual control of insulin secretion and β cell growth (Akiba et al., 2004). Thus, it will be particularly interesting to assess whether any of these *Trp* channel variants are under the control of GLP-1.

7. GLP-1 exerts a direct stimulatory effect on Ca^{2+} -dependent exocytosis

GLP-1 also exerts a direct action at “late steps” of β cell stimulus-secretion coupling in order to facilitate Ca^{2+} -dependent exocytosis of insulin. This capacity is understandable because PKA activity increases the size of a highly Ca^{2+} -sensitive pool (HCSP) of secretory granules in β cells (Wan et al., 2004; Yang and Gillis, 2004). Conceivably, this action of PKA may allow CICR to efficiently trigger insulin exocytosis (Kang and Holz, 2003). Since PKC activity also increases the size of the HCSP (Wan et al., 2004; Yang and Gillis, 2004), and since GLP-1 acts through PLC to activate PKC (Dzhura et al., 2010; Suzuki et al., 2006), it seems likely that the dual regulation of the HCSP by PKA and PKC underlies some stimulatory effects of GLP-1 on insulin secretion. Given that the HCSP is not prepositioned adjacent to VDCCs at the plasma membrane, this pool of secretory granules may undergo exocytosis in response to Ca^{2+} released from intracellular organelles.

Evidence also exists that GLP-1 acts through PKA to recruit secretory granules from a reserve pool into a readily releasable pool (RRP) that is docked and primed in close proximity to VDCCs (Renstrom et al., 1997). These secretory granules undergo exocytosis in response to high concentrations (10–20 μM) of Ca^{2+} that form in microdomains at the inner mouths of VDCCs (Barg et al., 2002; Bokvist et al., 1995). Thus, in the presence of GLP-1, and under conditions in which PKA is activated, Ca^{2+} influx through VDCCs initiates exocytosis of the RRP. Simultaneously, exocytosis of the HCSP may be initiated by CICR that is itself triggered by Ca^{2+} influx. This concept is consistent with the observation that CICR generates a global increase of cytosolic $[\text{Ca}^{2+}]$ that is comparatively small in magnitude (0.5–1.0 μM), but that may be capable of releasing the HCSP. One interesting prediction of this model is that in the absence of GLP-1, exocytosis stimulated by glucose metabolism will release a

small number of secretory granules located within the RRP without stimulating exocytosis of the HCSP. However, in the presence of GLP-1, both the RRP and the HCSP undergo exocytosis, thereby suggesting that exocytosis initiated by CICR constitutes an amplification mechanism that enables GLP-1 to potentiate GSIS (Kang and Holz, 2003).

A “post-priming” step in insulin exocytosis is also under the control of PKA, and it may mediate the action of GLP-1 to potentiate GSIS (Takahashi et al., 1999). This finding is understandable if in β cells there exists PKA-mediated phosphorylation of soluble *N*-ethylmaleimide-sensitive factor attachment protein receptor (SNARE) proteins, and their protein-interacting partners. Such proteins may include Snapin, a PKA substrate that interacts with the SNARE protein SNAP-25, and that regulates a direct association of the Ca^{2+} -sensor synaptotagmin with the core SNARE complex (Chheda et al., 2001; Ilardi et al., 1999; Song et al., 2011). More speculative is the potential role of PKA substrate Rim2. It is a SNAP-25 and Mun13-1 interacting protein that acts at an earlier step in exocytosis, one that supports the ATP-dependent priming of secretory granules, a step that renders the granules release competent (Kwan et al., 2007).

There is also substantial evidence that Epac2 participates in the regulation of exocytosis by GLP-1. For example, Epac2 interacts with Piccolo (a Ca^{2+} -sensor), and Rim2 (a Rab3 effector), both of which play a role in exocytosis (Shibasaki et al., 2004a). Moreover, the knockdown of Epac2 expression is reported to diminish GLP-1-stimulated insulin secretion by ca. 50% (Kashima et al., 2001). In these assays, the action of GLP-1 mediated by Epac2 is also demonstrated to be mediated by Rim2 (Kashima et al., 2001), and the importance of Rim2 to insulin exocytosis is now quite clear (Kwan et al., 2007; Yasuda et al., 2010). Interestingly, the SNARE protein SNAP-25 also binds Epac2, and the formation of an Epac2, SNAP-25, and Rim2 complex may mediate additional stimulatory actions of GLP-1 on insulin exocytosis (Vikman et al., 2009). Finally, it is important to note that Epac2 activation promotes secretory granule acidification, a step necessary for granule priming and release competence (Eliasson et al., 2003). Since this action of Epac2 is absent in SUR1 knockout mice, it appears that cAMP-dependent granule acidification is contingent on the interaction of Epac2 with SUR1. This might explain why the insulin secretagogue action of GLP-1 is reduced in SUR1 knockout mice (Nakazaki et al., 2002; Shiota et al., 2002).

Additional insights concerning the stimulatory action of GLP-1 on insulin secretion have been obtained in studies examining interactions of Ca^{2+} channel subunits with SNARE-associated proteins. Both Piccolo and Rim2 are reported to bind to the $\alpha 1.2$ subunit of L-type Ca^{2+} channels in β cells (Shibasaki et al., 2004a), and this interaction may anchor L-type Ca^{2+} channels in lipid rafts to form a signaling complex important for glucose and GLP-1 regulated insulin secretion (Jacobo et al., 2009b). The intracellular II-III loop of $\text{Ca}_v1.2$ immunoprecipitates with Rim2 (Jacobo et al., 2009b), consistent with previous data showing that Rim2 specifically binds $\text{Ca}_v1.2$ through its C2 domain (Shibasaki et al., 2004a). These findings correlate with the fact that the knockdown of $\text{Ca}_v1.2$ expression in INS-1 cells disrupts GSIS (Nitert et al., 2008).

Studies performed with transfected INS-1 cells expressing dyhydropyridine-insensitive Ca^{2+} channel mutants seem to indicate that GSIS under the control of GLP-1 also requires the expression of $\text{Ca}_v1.3$ (Liu et al., 2003). This approach has revealed that influx of Ca^{2+} through $\text{Ca}_v1.3$ stimulates exocytosis that can be potentiated by 8-pCPT-2'-*O*-Me-cAMP, and that this effect of the Epac activator requires permissive PKA activity since it is blocked by H-89 (Jacobo et al., 2009a; Liu et al., 2003). Similarly, the insulin secretagogue action of 8-pCPT-2'-*O*-Me-cAMP-AM in human islets is blocked by Rp-8-CPT-cAMPS, an antagonist of PKA activation (Chepurny et al., 2010). Importantly, the PKA-dependent insulin secretagogue action

of 8-pCPT-2'-O-Me-cAMP-AM is not explained by any unexpected action of this cAMP analog to activate PKA. This fact was demonstrated in assays of β cells expressing AKAR3, a biosensor that reports PKA activation (Chepurny et al., 2010). What remains unclear is the nature of the permissive PKA activity that supports insulin secretion. Available evidence suggests that permissive PKA activity might be the consequence of β cell glucose metabolism (Hatakeyama et al., 2006). Such findings lend credibility to the idea that PKA plays a critical role in support of insulin exocytosis that is under the dual control of glucose metabolism and GLP-1.

8. Current controversies regarding Epac2 and PKA

Despite direct evidence that GSIS can be potentiated by 8-pCPT-2'-O-Me-cAMP-AM (Chepurny et al., 2010), there exists controversy concerning the exact role Epac2 plays in the control of exocytosis. An important role for Epac2 is indicated since β cells of Epac2 KO mice exhibit a secretory defect in which the action of cAMP to potentiate first phase GSIS is reduced (Shibasaki et al., 2007). What is surprising is that two-photon extracellular polar-tracer (TEP) imaging studies of β cells do not substantiate a role for Epac2 in the control of insulin secretion (Hatakeyama et al., 2007). However, it is important to emphasize that these TEP studies were performed under conditions in which exocytosis was stimulated by the uncaging of Ca^{2+} . Exocytosis studied in this manner is not representative of GSIS due to the fact that this approach bypasses early steps of stimulus-secretion coupling that involve K_{ATP} channel closure. Since first phase GSIS is primarily a K_{ATP} channel dependent mechanism of exocytosis (Henquin, 2000), and since the KO of Epac2 disrupts first phase GSIS, it could be that under true physiological conditions, the primary role of Epac2 is to mediate cAMP-dependent closure of K_{ATP} channels, thereby depolarizing β cells. This concept is consistent with the therapeutically important action of GLP-1 to restore the missing first phase component of GSIS in patients with T2DM. In this regard, it is noteworthy that the action of GLP-1 to potentiate GSIS is strongly attenuated in mice in which there is a knockout of the K_{ATP} channel SUR1 or Kir6.2 subunits (Miki et al., 2005; Nakazaki et al., 2002; Shiota et al., 2002). These findings are interpretable if an Epac2-mediated action of GLP-1 to close K_{ATP} channels plays an important role in conferring stimulatory effects of GLP-1 on insulin secretion. This concept is further supported by studies of *Kcnj11*^{Y12STOP} mice in which the insulin secretagogue action of GLP-1 is reduced (Hugill et al., 2010). In these mutant mice, the gene coding for Kir6.2 (*Kcnj11*) contains an inactivating tyrosine to stop codon point mutation (Y12STOP) so that K_{ATP} channel activity is undetectable in islet β cells. Thus, in β cells with no active K_{ATP} channels, the insulin secretagogue action of GLP-1 is nearly absent, thereby establishing K_{ATP} channels to be critically important intermediaries linking GLP-1R activation to islet insulin secretion (Hugill et al., 2010).

9. Summary

The remarkable effectiveness of incretin-based therapies for the treatment of T2DM has spurred continued efforts to pinpoint exactly how GLP-1 exerts its stimulatory effects at the β cell. In this regard, ongoing efforts are primarily devoted to understanding the differential, yet complementary roles, PKA and Epac2 play in the potentiation of GSIS. An outgrowth of recent studies is that it is increasingly appreciated that GLP-1 may act through PKA and Epac2 to modulate the ADP and ATP sensitivities of K^+ channels (Light et al., 2002; Kang et al., 2008). This action of GLP-1 may allow β cell glucose metabolism to more efficiently close these channels,

thereby stimulating insulin secretion. To what extent GLP-1 has any capacity to enhance oxidative glucose metabolism in the β cell is a topic of considerable interest. However, discrepant findings concerning this possibility remain to be resolved (Peyot et al., 2009; Tsuboi et al., 2003). In conclusion, the biochemical and molecular basis for beneficial insulin secretagogue and blood glucose-lowering actions of incretin mimetics, GLP-1R analogs, and DPP-IV inhibitors remains a topic of considerable interest to the diabetes research community.

Acknowledgments

G.G.H. acknowledges the support of the NIH (R01-DK045817; R01-DK069575). C.A.L. acknowledges the support of the American Diabetes Association (Basic Science Research Grant Award).

References

- Ahren, B., 2009. Clinical results of treating type 2 diabetic patients with sitagliptin, vildagliptin or saxagliptin – diabetes control and potential adverse events. *Best Pract. Res. Clin. Endocrinol. Metab.* 23, 487–498.
- Akiba, Y., Kato, S., Katsube, K., Nakamura, M., Takeuchi, K., Ishii, H., Hibi, T., 2004. Transient receptor potential vanilloid subfamily 1 expressed in pancreatic islet beta cells modulates insulin secretion in rats. *Biochem. Biophys. Res. Commun.* 321, 219–225.
- Arredouani, A., Evans, A.M., Ma, J., Parrington, J., Zhu, M.X., Galione, A., 2010. An emerging role for NAADP-mediated Ca^{2+} signaling in the pancreatic beta-cell. *Islets* 2, 323–330.
- Asmar, M., Holst, J.J., 2010. Glucagon-like peptide 1 and glucose-dependent insulinotropic polypeptide: new advances. *Curr. Opin. Endocrinol. Diabetes Obes.* 17, 57–62.
- Barg, S., Eliasson, L., Renstrom, E., Rorsman, P., 2002. A subset of 50 secretory granules in close contact with L-type Ca^{2+} channels accounts for first-phase insulin secretion in mouse beta-cells. *Diabetes* 51 (Suppl. 1), S74–S82.
- Beauvais, M.C., Arredouani, A., Jonas, J.C., Rolland, J.F., Schuit, F., Henquin, J.C., Gilon, P., 2004. Atypical Ca^{2+} -induced Ca^{2+} release from a sarco-endoplasmic reticulum Ca^{2+} -ATPase 3-dependent Ca^{2+} pool in mouse pancreatic beta-cells. *J. Physiol.* 559, 141–156.
- Bokvist, K., Eliasson, L., Ammala, C., Renstrom, E., Rorsman, P., 1995. Co-localization of L-type Ca^{2+} channels and insulin-containing secretory granules and its significance for the initiation of exocytosis in mouse pancreatic B-cells. *EMBO J.* 14, 50–57.
- Brixel, L.R., Monteilh-Zoller, M.K., Ingenbrandt, C.S., Fleig, A., Penner, R., Enklaar, T., Zabel, B.U., Prawitt, D., 2010. TRPM5 regulates glucose-stimulated insulin secretion. *Pflugers Arch.* 460, 69–76.
- Buteau, J., Foisy, S., Joly, E., Prentki, M., 2003. Glucagon-like peptide 1 induces pancreatic beta-cell proliferation via transactivation of the epidermal growth factor receptor. *Diabetes* 52, 124–132.
- Calcraft, P.J., Ruas, M., Pan, Z., Cheng, X., Arredouani, A., Hao, X., Tang, J., Rietdorf, K., Teboul, L., Chuang, K.T., Lin, P., Xiao, R., Wang, C., Zhu, Y., Lin, Y., Wyatt, C.N., Parrington, J., Ma, J., Evans, A.M., Galione, A., Zhu, M.X., 2009. NAADP mobilizes calcium from acidic organelles through two-pore channels. *Nature* 459, 596–600.
- Cheng, H., Beck, A., Launay, P., Gross, S.A., Stokes, A.J., Kinet, J.P., Fleig, A., Penner, R., 2007. TRPM4 controls insulin secretion in pancreatic beta-cells. *Cell Calcium* 41, 51–61.
- Chepurny, O.G., Kelley, G.G., Dzhura, I., Leech, C.A., Roe, M.W., Dzhura, E., Li, X., Schwede, F., Genieser, H.G., Holz, G.G., 2010. PKA-dependent potentiation of glucose-stimulated insulin secretion by Epac activator 8-pCPT-2'-O-Me-cAMP-AM in human islets of Langerhans. *Am. J. Physiol. Endocrinol. Metab.* 298, E622–E633.
- Chepurny, O.G., Leech, C.A., Kelley, G.G., Dzhura, I., Dzhura, E., Li, X., Rindler, M.J., Schwede, F., Genieser, H.G., Holz, G.G., 2009. Enhanced Rap1 activation and insulin secretagogue properties of an acetoxymethyl ester of an Epac-selective cyclic AMP analog in rat INS-1 cells: studies with 8-pCPT-2'-O-Me-cAMP-AM. *J. Biol. Chem.* 284, 10728–10736.
- Chheda, M.G., Ashery, U., Thakur, P., Rettig, J., Sheng, Z.H., 2001. Phosphorylation of Snapin by PKA modulates its interaction with the SNARE complex. *Nat. Cell Biol.* 3, 331–338.
- Chu, Z.L., Carroll, C., Alfonso, J., Gutierrez, V., He, H., Lucman, A., Pedraza, M., Mondala, H., Gao, H., Bagnol, D., Chen, R., Jones, R.M., Behan, D.P., Leonard, J., 2008. A role for intestinal endocrine cell-expressed G protein-coupled receptor 119 in glycemic control by enhancing glucagon-like Peptide-1 and glucose-dependent insulinotropic Peptide release. *Endocrinology* 149, 2038–2047.
- Chu, Z.L., Jones, R.M., He, H., Carroll, C., Gutierrez, V., Lucman, A., Moloney, M., Gao, H., Mondala, H., Bagnol, D., Unett, D., Liang, Y., Demarest, K., Semple, G., Behan, D.P., Leonard, J., 2007. A role for beta-cell-expressed G protein-coupled receptor 119 in glycemic control by enhancing glucose-dependent insulin release. *Endocrinology* 148, 2601–2609.
- Colsoul, B., Schraenen, A., Lemaire, K., Quintens, R., Van Lommel, L., Segal, A., Owsianik, G., Talavera, K., Voets, T., Margolske, R.F., Kokrashvili, Z., Gilon, P.,

- Nilius, B., Schuit, F.C., Vennekens, R., 2010. Loss of high-frequency glucose-induced Ca^{2+} oscillations in pancreatic islets correlates with impaired glucose tolerance in *Trpm5*^{-/-} mice. *Proc. Natl. Acad. Sci. U S A* 107, 5208–5213.
- Dyachok, O., Gylfe, E., 2004. Ca^{2+} -induced Ca^{2+} release via inositol 1,4,5-trisphosphate receptors is amplified by protein kinase A and triggers exocytosis in pancreatic beta-cells. *J. Biol. Chem.* 279, 45455–45461.
- Dyachok, O., Idevall-Hagren, O., Sagetorp, J., Tian, G., Wuttke, A., Arriemerlou, C., Akusjarvi, G., Gylfe, E., Tengholm, A., 2008. Glucose-induced cyclic AMP oscillations regulate pulsatile insulin secretion. *Cell Metab.* 8, 26–37.
- Dyachok, O., Tufveson, G., Gylfe, E., 2004. Ca^{2+} -induced Ca^{2+} release by activation of inositol 1,4,5-trisphosphate receptors in primary pancreatic beta-cells. *Cell Calcium* 36, 1–9.
- Dzhura, I., Chepurny, O.G., Kelley, G.G., Leech, C.A., Roe, M.W., Dzhura, E., Afshari, P., Malik, S., Rindler, M.J., Xu, X., Lu, Y., Smrcka, A.V., Holz, G.G., 2010. Epac2-dependent mobilization of intracellular Ca^{2+} by GLP-1 receptor agonist Exendin-4 is disrupted in beta cells of PLC-[epsilon] knockout mice. *J. Physiol.*
- Eliasson, L., Ma, X., Renstrom, E., Barg, S., Berggren, P.O., Galvanovskis, J., Gromada, J., Jing, X., Lundquist, I., Salehi, A., Sewing, S., Rorsman, P., 2003. SUR1 regulates PKA-independent cAMP-induced granule priming in mouse pancreatic beta-cells. *J. Gen. Physiol.* 121, 181–197.
- Enserink, J.M., Christensen, A.E., de Rooij, J., van Triest, M., Schwede, F., Genieser, H.G., Doskeland, S.O., Blank, J.L., Bos, J.L., 2002. A novel Epac-specific cAMP analogue demonstrates independent regulation of Rap1 and ERK. *Nat. Cell Biol.* 4, 901–906.
- Gallione, A., Morgan, A.J., Arredouani, A., Davis, L.C., Rietdorf, K., Ruas, M., Parrington, J., 2010. NAADP as an intracellular messenger regulating lysosomal calcium-release channels. *Biochem. Soc. Trans.* 38, 1424–1431.
- Gromada, J., Bokvist, K., Ding, W.G., Holst, J.J., Nielsen, J.H., Rorsman, P., 1998. Glucagon-like peptide 1 (7–36) amide stimulates exocytosis in human pancreatic beta-cells by both proximal and distal regulatory steps in stimulus-secretion coupling. *Diabetes* 47, 57–65.
- Gromada, J., Brock, B., Schmitz, O., Rorsman, P., 2004. Glucagon-like peptide-1: regulation of insulin secretion and therapeutic potential. *Basic Clin. Pharmacol. Toxicol.* 95, 252–262.
- Gromada, J., Dissing, S., Bokvist, K., Renstrom, E., Frokjaer-Jensen, J., Wulff, B.S., Rorsman, P., 1995. Glucagon-like peptide 1 increases cytoplasmic calcium in insulin-secreting beta TC3-cells by enhancement of intracellular calcium mobilization. *Diabetes* 44, 767–774.
- Hare, K.J., Vilsboll, T., Asmar, M., Deacon, C.F., Knop, F.K., Holst, J.J., 2010. The glucagonostatic and insulinotropic effects of glucagon-like peptide 1 contribute equally to its glucose-lowering action. *Diabetes* 59, 1765–1770.
- Hatakeyama, H., Kishimoto, T., Nemoto, T., Kasai, H., Takahashi, N., 2006. Rapid glucose sensing by protein kinase A for insulin exocytosis in mouse pancreatic islets. *J. Physiol.* 570, 271–282.
- Hatakeyama, H., Takahashi, N., Kishimoto, T., Nemoto, T., Kasai, H., 2007. Two cAMP-dependent pathways differentially regulate exocytosis of large dense-core and small vesicles in mouse beta-cells. *J. Physiol.* 582, 1087–1098.
- Henquin, J.C., 2000. Triggering and amplifying pathways of regulation of insulin secretion by glucose. *Diabetes* 49, 1751–1760.
- Holst, J.J., 2004. Treatment of type 2 diabetes mellitus with agonists of the GLP-1 receptor or DPP-IV inhibitors. *Expert Opin. Emerg. Drugs* 9, 155–166.
- Holz, G.G., 2004a. Epac: a new cAMP-binding protein in support of glucagon-like peptide-1 receptor-mediated signal transduction in the pancreatic beta cell. *Diabetes* 53, 5–13.
- Holz, G.G., 2004b. New insights concerning the glucose-dependent insulin secretagogue action of glucagon-like peptide-1 in pancreatic beta-cells. *Horm. Metab. Res.* 36, 787–794.
- Holz, G.G., Chepurny, O.G., 2003. Glucagon-like peptide-1 synthetic analogs: new therapeutic agents for use in the treatment of diabetes mellitus. *Curr. Med. Chem.* 10, 2471–2483.
- Holz, G.G., Chepurny, O.G., 2005. Diabetes outfoxed by GLP-1? *Sci. STKE* 2005, pe2.
- Holz, G.G., Chepurny, O.G., Schwede, F., 2008a. Epac-selective cAMP analogs: new tools with which to evaluate the signal transduction properties of cAMP-regulated guanine nucleotide exchange factors. *Cell Signal.* 20, 10–20.
- Holz, G.G., Habener, J.F., 1992. Signal transduction crosstalk in the endocrine system: pancreatic beta cells and the glucose competence concept. *Trends Biochem. Sci.* 17, 388–393.
- Holz, G.G., Heart, E., Leech, C.A., 2008b. Synchronizing Ca^{2+} and cAMP oscillations in pancreatic beta-cells: a role for glucose metabolism and GLP-1 receptors? Focus on “regulation of cAMP dynamics by Ca^{2+} and G protein-coupled receptors in the pancreatic beta-cell: a computational approach”. *Am. J. Physiol. Cell Physiol.* 294, C4–C6.
- Holz, G.G., Kang, G., Harbeck, M., Roe, M.W., Chepurny, O.G., 2006. Cell physiology of cAMP sensor Epac. *J. Physiol.* 577, 5–15.
- Holz, G.G., Kuhlreiter, W.M., Habener, J.F., 1993. Pancreatic beta cells are rendered glucose-competent by the insulinotropic hormone glucagon-like peptide-1(7–37). *Nature* 361, 362–365.
- Holz, G.G., Leech, C.A., Habener, J.F., 1995. Activation of a cAMP-regulated Ca^{2+} -signaling pathway in pancreatic beta cells by the insulinotropic hormone glucagon-like peptide-1. *J. Biol. Chem.* 270, 17749–17757.
- Holz, G.G., Leech, C.A., Heller, R.S., Castonguay, M., Habener, J.F., 1999. cAMP-dependent mobilization of intracellular Ca^{2+} stores by activation of ryanodine receptors in pancreatic beta-cells. A Ca^{2+} signaling system stimulated by the insulinotropic hormone glucagon-like peptide-1(7–37). *J. Biol. Chem.* 274, 14147–14156.
- Hugill, A., Shimomura, K., Ashcroft, F.M., Cox, R.D., 2010. A mutation in *KCNJ11* causing human hyperinsulinism (Y12X) results in a glucose-intolerant phenotype in the mouse. *Diabetologia* 53, 2352–2356.
- Ildardi, J.M., Mochida, S., Sheng, Z.H., 1999. Snapin: a SNARE-associated protein implicated in synaptic transmission. *Nat. Neurosci.* 2, 119–124.
- Islam, M.S., 2010. Calcium signaling in the islets. *Adv. Exp. Med. Biol.* 654, 235–259.
- Israilli, Z.H., 2009. Advances in the treatment of type 2 diabetes mellitus. *Am. J. Ther.* PMID: 19834322.
- Jacobo, S.M., Guerra, M.L., Hockerman, G.H., 2009a. Cav1.2 and Cav1.3 are differentially coupled to glucagon-like peptide-1 potentiation of glucose-stimulated insulin secretion in the pancreatic beta-cell line INS-1. *J. Pharmacol. Exp. Ther.* 331, 724–732.
- Jacobo, S.M., Guerra, M.L., Jarrard, R.E., Przybyla, J.A., Liu, G., Watts, V.J., Hockerman, G.H., 2009b. The intracellular II-III loops of $\text{Ca}_v1.2$ and $\text{Ca}_v1.3$ uncouple L-type voltage-gated Ca^{2+} channels from glucagon-like peptide-1 potentiation of insulin secretion in INS-1 cells via displacement from lipid rafts. *J. Pharmacol. Exp. Ther.* 330, 283–293.
- Jones, R.M., Leonard, J.N., Buzard, D.J., Lehmann, J., 2009. GPR119 agonists for the treatment of type 2 diabetes. *Expert Opin. Ther. Pat.* 19, 1339–1359.
- Kang, G., Chepurny, O.G., Holz, G.G., 2001. cAMP-regulated guanine nucleotide exchange factor II (Epac2) mediates Ca^{2+} -induced Ca^{2+} release in INS-1 pancreatic beta cells. *J. Physiol.* 536, 375–385.
- Kang, G., Chepurny, O.G., Malester, B., Rindler, M.J., Rehmann, H., Bos, J.L., Schwede, F., Coetzee, W.A., Holz, G.G., 2006. cAMP sensor Epac as a determinant of ATP-sensitive potassium channel activity in human pancreatic beta cells and rat INS-1 cells. *J. Physiol.* 573, 595–609.
- Kang, G., Chepurny, O.G., Rindler, M.J., Collis, L., Chepurny, Z., Li, W.H., Harbeck, M., Roe, M.W., Holz, G.G., 2005. A cAMP and Ca^{2+} coincidence detector in support of Ca^{2+} -induced Ca^{2+} release in mouse pancreatic beta cells. *J. Physiol.* 566, 173–188.
- Kang, G., Holz, G.G., 2003. Amplification of exocytosis by Ca^{2+} -induced Ca^{2+} release in INS-1 pancreatic beta cells. *J. Physiol.* 546, 175–189.
- Kang, G., Joseph, J.W., Chepurny, O.G., Monaco, M., Wheeler, M.B., Bos, J.L., Schwede, F., Genieser, H.G., Holz, G.G., 2003. Epac-selective cAMP analog 8-pCPT-2'-O-Me-cAMP as a stimulus for Ca^{2+} -induced Ca^{2+} release and exocytosis in pancreatic beta cells. *J. Biol. Chem.* 278, 8279–8285.
- Kang, G., Leech, C.A., Chepurny, O.G., Coetzee, W.A., Holz, G.G., 2008. Role of the cAMP sensor Epac as a determinant of K-ATP channel ATP sensitivity in human pancreatic beta cells and rat INS-1 cells. *J. Physiol.* 586, 1307–1319.
- Kashima, Y., Miki, T., Shibasaki, T., Ozaki, N., Miyazaki, M., Yano, H., Seino, S., 2001. Critical role of cAMP-GEFII-Rim2 complex in incretin-potentiated insulin secretion. *J. Biol. Chem.* 276, 46046–46053.
- Kelley, G.G., Chepurny, O.G., Leech, C.A., Roe, M.W., Li, X., Dzhura, I., Dzhura, E., Afshari, P., Holz, G.G., 2009. Glucose-dependent potentiation of mouse islet insulin secretion by Epac activator 8-pCPT-2'-O-Me-cAMP-AM. *Islets* 1, 1–6.
- Kieffer, T.J., Habener, J.F., 1999. The glucagon-like peptides. *Endocr. Rev.* 20, 876–913.
- Kim, B.J., Park, K.H., Yim, C.Y., Takasawa, S., Okamoto, H., Im, M.J., Kim, U.H., 2008. Generation of nicotinic acid adenine dinucleotide phosphate and cyclic ADP-ribose by glucagon-like peptide-1 evokes Ca^{2+} signal that is essential for insulin secretion in mouse pancreatic islets. *Diabetes* 57, 868–878.
- Knop, F.K., Holst, J.J., Vilsboll, T., 2008. Replacing SUs with incretin-based therapies for type 2 diabetes mellitus: challenges and feasibility. *IDrugs* 11, 497–501.
- Kwan, E.P., Xie, L., Sheu, L., Ohtsuka, T., Gaisano, H.Y., 2007. Interaction between Munc13-1 and RIM is critical for glucagon-like peptide-1 mediated rescue of exocytotic defects in Munc13-1 deficient pancreatic beta-cells. *Diabetes* 56, 2579–2588.
- Landa Jr., L.R., Harbeck, M., Kaihara, K., Chepurny, O., Kitiphongpattana, K., Graf, O., Nikolaev, V.O., Lohse, M.J., Holz, G.G., Roe, M.W., 2005. Interplay of Ca^{2+} and cAMP signaling in the insulin-secreting MIN6 beta cell line. *J. Biol. Chem.* 280, 31294–31302.
- Lange, I., Yamamoto, S., Partida-Sanchez, S., Mori, Y., Fleig, A., Penner, R., 2009. TRPM2 functions as a lysosomal Ca^{2+} -release channel in beta cells. *Sci. Signal.* 2, ra23.
- Leech, C.A., Dzhura, I., Chepurny, O.G., Schwede, F., Genieser, H.-G., Holz, G.G., 2010. Facilitation of beta cell K_{ATP} channel sulfonylurea sensitivity by a cAMP analog selective for the cAMP-regulated guanine nucleotide exchange factor Epac. *Islets* 2, 72–81.
- Leech, C.A., Habener, J.F., 1998. A role for Ca^{2+} -sensitive nonselective cation channels in regulating the membrane potential of pancreatic beta cells. *Diabetes* 47, 1066–1073.
- Lester, L.B., Langeberg, L.K., Scott, J.D., 1997. Anchoring of protein kinase A facilitates hormone-mediated insulin secretion. *Proc. Natl. Acad. Sci. U S A* 94, 14942–14947.
- Light, P.E., Manning Fox, J.E., Riedel, M.J., Wheeler, M.B., 2002. Glucagon-like peptide-1 inhibits pancreatic ATP-sensitive potassium channels via a protein kinase A- and ADP-dependent mechanism. *Mol. Endocrinol.* 16, 2135–2144.
- Liu, G., Dilmac, N., Hilliard, N., Hockerman, G.H., 2003. $\text{Ca}_v1.3$ is preferentially coupled to glucose-stimulated insulin secretion in the pancreatic beta-cell line INS-1. *J. Pharmacol. Exp. Ther.* 305, 271–278.
- Lovshin, J.A., Drucker, D.J., 2009. Incretin-based therapies for type 2 diabetes mellitus. *Nat. Rev. Endocrinol.* 5, 262–269.
- MacDonald, P.E., Salapatek, A.M., Wheeler, M.B., 2002. Glucagon-like peptide-1 receptor activation antagonizes voltage-dependent repolarizing K^+ currents in beta-cells: a possible glucose-dependent insulinotropic mechanism. *Diabetes* 51 (Suppl. 3), S443–S447.
- MacDonald, P.E., Wang, X., Xia, F., El-Kholy, W., Targonsky, E.D., Tsushima, R.G., Wheeler, M.B., 2003. Antagonism of rat beta-cell voltage-dependent K^+ currents by exendin 4 requires dual activation of the cAMP/protein kinase A and phosphatidylinositol 3-kinase signaling pathways. *J. Biol. Chem.* 278, 52446–52453.

- Marigo, V., Courville, K., Hsu, W.H., Feng, J.M., Cheng, H., 2009. TRPM4 impacts on Ca^{2+} signals during agonist-induced insulin secretion in pancreatic beta-cells. *Mol. Cell Endocrinol.* 299, 194–203.
- Miki, T., Minami, K., Shinozaki, H., Matsumura, K., Saraya, A., Ikeda, H., Yamada, Y., Holst, J.J., Seino, S., 2005. Distinct effects of glucose-dependent insulinotropic polypeptide and glucagon-like peptide-1 on insulin secretion and gut motility. *Diabetes* 54, 1056–1063.
- Nakazaki, M., Crane, A., Hu, M., Seghers, V., Ullrich, S., Aguilar-Bryan, L., Bryan, J., 2002. cAMP-activated protein kinase-independent potentiation of insulin secretion by cAMP is impaired in SUR1 null islets. *Diabetes* 51, 3440–3449.
- Nauck, M.A., 2011. Incretin-based therapies for type 2 diabetes mellitus: properties, functions, and clinical implications. *Am. J. Med.* 124, S3–S18.
- Naylor, E., Arredouani, A., Vasudevan, S.R., Lewis, A.M., Parkesh, R., Mizote, A., Rosen, D., Thomas, J.M., Izumi, M., Ganesan, A., Galione, A., Churchill, G.C., 2009. Identification of a chemical probe for NAADP by virtual screening. *Nat. Chem. Biol.* 5, 220–226.
- Niimura, M., Miki, T., Shibasaki, T., Fujimoto, W., Iwanaga, T., Seino, S., 2009. Critical role of the N-terminal cyclic AMP-binding domain of Epac2 in its subcellular localization and function. *J. Cell Physiol.* 219, 652–658.
- Nitert, M.D., Nagorny, C.L., Wendt, A., Eliasson, L., Mulder, H., 2008. $Ca_v1.2$ rather than $Ca_v1.3$ is coupled to glucose-stimulated insulin secretion in INS-1 832/13 cells. *J. Mol. Endocrinol.* 41, 1–11.
- Oestreich, E.A., Malik, S., Goonasekera, S.A., Blaxall, B.C., Kelley, G.G., Dirksen, R.T., Smrcka, A.V., 2009. Epac and phospholipase Cepsilon regulate Ca^{2+} release in the heart by activation of protein kinase Cepsilon and calcium-calmodulin kinase II. *J. Biol. Chem.* 284, 1514–1522.
- Ozaki, N., Shibasaki, T., Kashima, Y., Miki, T., Takahashi, K., Ueno, H., Sunaga, Y., Yano, H., Matsuura, Y., Iwanaga, T., Takai, Y., Seino, S., 2000. cAMP-GEFI1 is a direct target of cAMP in regulated exocytosis. *Nat. Cell Biol.* 2, 805–811.
- Ozbay, L., Smidt, K., Mortensen, D., Carstens, J., Jorgensen, K., Rungby, J., 2011. Cyclosporin and tacrolimus impair insulin secretion and transcriptional regulation in INS-1E beta-cells. *Br. J. Pharmacol.* 162, 136–146.
- Peyot, M.L., Gray, J.P., Lamontagne, J., Smith, P.J., Holz, G.G., Madiraju, S.R., Prentki, M., Heart, E., 2009. Glucagon-like peptide-1 induced signaling and insulin secretion do not drive fuel and energy metabolism in primary rodent pancreatic beta-cells. *PLoS One* 4, e6221.
- Purves, G.I., Kamishima, T., Davies, L.M., Quayle, J.M., Dart, C., 2009. Exchange protein activated by cAMP (Epac) mediates cAMP-dependent but protein kinase A-insensitive modulation of vascular ATP-sensitive potassium channels. *J. Physiol.* 587, 3639–3650.
- Reale, V., Hales, C.N., Ashford, M.L., 1995. Regulation of calcium-activated non-selective cation channel activity by cyclic nucleotides in the rat insulinoma cell line, CRI-G1. *J. Membr. Biol.* 145, 267–278.
- Rehmann, H., Wittinghofer, A., Bos, J.L., 2007. Capturing cyclic nucleotides in action: snapshots from crystallographic studies. *Nat. Rev. Mol. Cell Biol.* 8, 63–73.
- Renstrom, E., Eliasson, L., Rorsman, P., 1997. Protein kinase A-dependent and -independent stimulation of exocytosis by cAMP in mouse pancreatic β cells. *J. Physiol.* 502 (Pt 1), 105–118.
- Shah, U., Kowalski, T.J., 2010. GPR119 agonists for the potential treatment of type 2 diabetes and related metabolic disorders. *Vitam Horm.* 84, 415–448.
- Sheu, L., Pasyk, E.A., Ji, J., Huang, X., Gao, X., Varoqueaux, F., Brose, N., Gaisano, H.Y., 2003. Regulation of insulin exocytosis by Munc13-1. *J. Biol. Chem.* 278, 27556–27563.
- Shibasaki, T., Sunaga, Y., Fujimoto, K., Kashima, Y., Seino, S., 2004a. Interaction of ATP sensor, cAMP sensor, Ca^{2+} sensor, and voltage-dependent Ca^{2+} channel in insulin granule exocytosis. *J. Biol. Chem.* 279, 7956–7961.
- Shibasaki, T., Sunaga, Y., Seino, S., 2004b. Integration of ATP, cAMP, and Ca^{2+} signals in insulin granule exocytosis. *Diabetes* 53 (Suppl. 3), S59–S62.
- Shibasaki, T., Takahashi, H., Miki, T., Sunaga, Y., Matsumura, K., Yamanaka, M., Zhang, C., Tamamoto, A., Satoh, T., Miyazaki, J., Seino, S., 2007. Essential role of Epac2/Rap1 signaling in regulation of insulin granule dynamics by cAMP. *Proc. Natl. Acad. Sci. U S A* 104, 19333–19338.
- Shiota, C., Larsson, O., Shelton, K.D., Shiota, M., Efanov, A.M., Hoy, M., Lindner, J., Koopitwut, S., Juntti-Berggren, L., Gromada, J., Berggren, P.O., Magnuson, M.A., 2002. Sulfonylurea receptor type 1 knock-out mice have intact feeding-stimulated insulin secretion despite marked impairment in their response to glucose. *J. Biol. Chem.* 277, 37176–37183.
- Sjoberg, T.J., Kornev, A.P., Taylor, S.S., 2010. Dissecting the cAMP-inducible allosteric switch in protein kinase A R1alpha. *Protein Sci.* 19, 1213–1221.
- Song, W.J., Seshadri, M., Ashraf, U., Mdluli, T., Mondal, P., Keil, M., Azevedo, M., Kirschner, L.S., Stratakis, C.A., Hussain, M.A., 2011. Snapin mediates incretin action and augments glucose-dependent insulin secretion. *Cell Metabol.* 13 (3), 308–319.
- Sturgess, N.C., Hales, C.N., Ashford, M.L., 1986. Inhibition of a calcium-activated, non-selective cation channel, in a rat insulinoma cell line, by adenine derivatives. *FEBS Lett.* 208, 397–400.
- Suzuki, Y., Zhang, H., Saito, N., Kojima, I., Urano, T., Mogami, H., 2006. Glucagon-like peptide 1 activates protein kinase C through Ca^{2+} -dependent activation of phospholipase C in insulin-secreting cells. *J. Biol. Chem.* 281, 28499–28507.
- Takahashi, N., Kadowaki, T., Yazaki, Y., Ellis-Davies, G.C., Miyashita, Y., Kasai, H., 1999. Post-priming actions of ATP on Ca^{2+} -dependent exocytosis in pancreatic β cells. *Proc. Natl. Acad. Sci. U S A* 96, 760–765.
- Togashi, K., Hara, Y., Tominaga, T., Higashi, T., Konishi, Y., Mori, Y., Tominaga, M., 2006. TRPM2 activation by cyclic ADP-ribose at body temperature is involved in insulin secretion. *EMBO J.* 25, 1804–1815.
- Tomas, E., Habener, J.F., 2010. Insulin-like actions of glucagon-like peptide-1: a dual receptor hypothesis. *Trends Endocrinol. Metab.* 21, 59–67.
- Tomas, E., Stanojevic, V., Habener, J.F., 2011. GLP-1-derived nonapeptide GLP-1(28–36)amide targets to mitochondria and suppresses glucose production and oxidative stress in isolated mouse hepatocytes. *Regul. Pept.*
- Tovey, S.C., Dedos, S.G., Rahman, T., Taylor, E.J., Pantazaka, E., Taylor, C.W., 2010. Regulation of inositol 1,4,5-trisphosphate receptors by cAMP independent of cAMP-dependent protein kinase. *J. Biol. Chem.* 285, 12979–12989.
- Tsuboi, T., da Silva Xavier, G., Holz, G.G., Jouaville, L.S., Thomas, A.P., Rutter, G.A., 2003. Glucagon-like peptide-1 mobilizes intracellular Ca^{2+} and stimulates mitochondrial ATP synthesis in pancreatic MIN6 β cells. *Biochem. J.* 369, 287–299.
- Uchida, K., Dezaki, K., Damdindorj, B., Inada, H., Shiuchi, T., Mori, Y., Yada, T., Minokoshi, Y., Tominaga, M., 2011. Lack of trpm2 impaired insulin secretion and glucose metabolisms in mice. *Diabetes* 60, 119–126.
- Vikman, J., Svensson, H., Huang, Y.C., Kang, Y., Andersson, S.A., Gaisano, H.Y., Eliasson, L., 2009. Truncation of SNAP-25 reduces the stimulatory action of cAMP on rapid exocytosis in insulin-secreting cells. *Am. J. Physiol. Endocrinol. Metab.* 297, E452–E461.
- Vliem, M.J., Ponsioen, B., Schwede, F., Pannekoek, W.J., Riedl, J., Kooistra, M.R., Jalink, K., Genieser, H.G., Bos, J.L., Rehmann, H., 2008. 8-pCPT-2'-O-Me-cAMP-AM: an improved Epac-selective cAMP analogue. *Chembiochem* 9, 2052–2054.
- Wan, Q.F., Dong, Y., Yang, H., Lou, X., Ding, J., Xu, T., 2004. Protein kinase activation increases insulin secretion by sensitizing the secretory machinery to Ca^{2+} . *J. Gen. Physiol.* 124, 653–662.
- Yaekura, K., Yada, T., 1998. $[Ca^{2+}]_i$ -reducing action of cAMP in rat pancreatic beta-cells: involvement of thapsigargin-sensitive stores. *Am. J. Physiol.* 274, C513–C521.
- Yang, Y., Gillis, K.D., 2004. A highly Ca^{2+} -sensitive pool of granules is regulated by glucose and protein kinases in insulin-secreting INS-1 cells. *J. Gen. Physiol.* 124, 641–651.
- Yasuda, T., Shibasaki, T., Minami, K., Takahashi, H., Mizoguchi, A., Uriu, Y., Numata, T., Mori, Y., Miyazaki, J., Miki, T., Seino, S., 2010. Rim2alpha determines docking and priming states in insulin granule exocytosis. *Cell Metab.* 12, 117–129.